



29 Newlands Road

High West Jesmond



SANDERSON
YOUNG





29 Newlands Road
High West Jesmond, NE2 3NT

Well Presented Upper 'Tyneside' Maisonette Apartment with Generous Front Living Room, Kitchen/Diner, Three Bedrooms, Family Bathroom, Private Rear Courtyard and No Onward Chain!

This lovely three bedroom upper Tyneside maisonette is ideally located on Newlands Road, High West Jesmond. The apartment itself, which is placed just off from Moorfield and Lodore Road, is perfectly placed close to Gosforth High Street, Central Jesmond and Little Moor.

The property is also placed only a stone's throw from Ilford Road Metro Station providing excellent transport links throughout the region garden, which is west facing, and with access onto the service lane.

Price Guide:
Offers Over £275,000

³

¹

²

 D





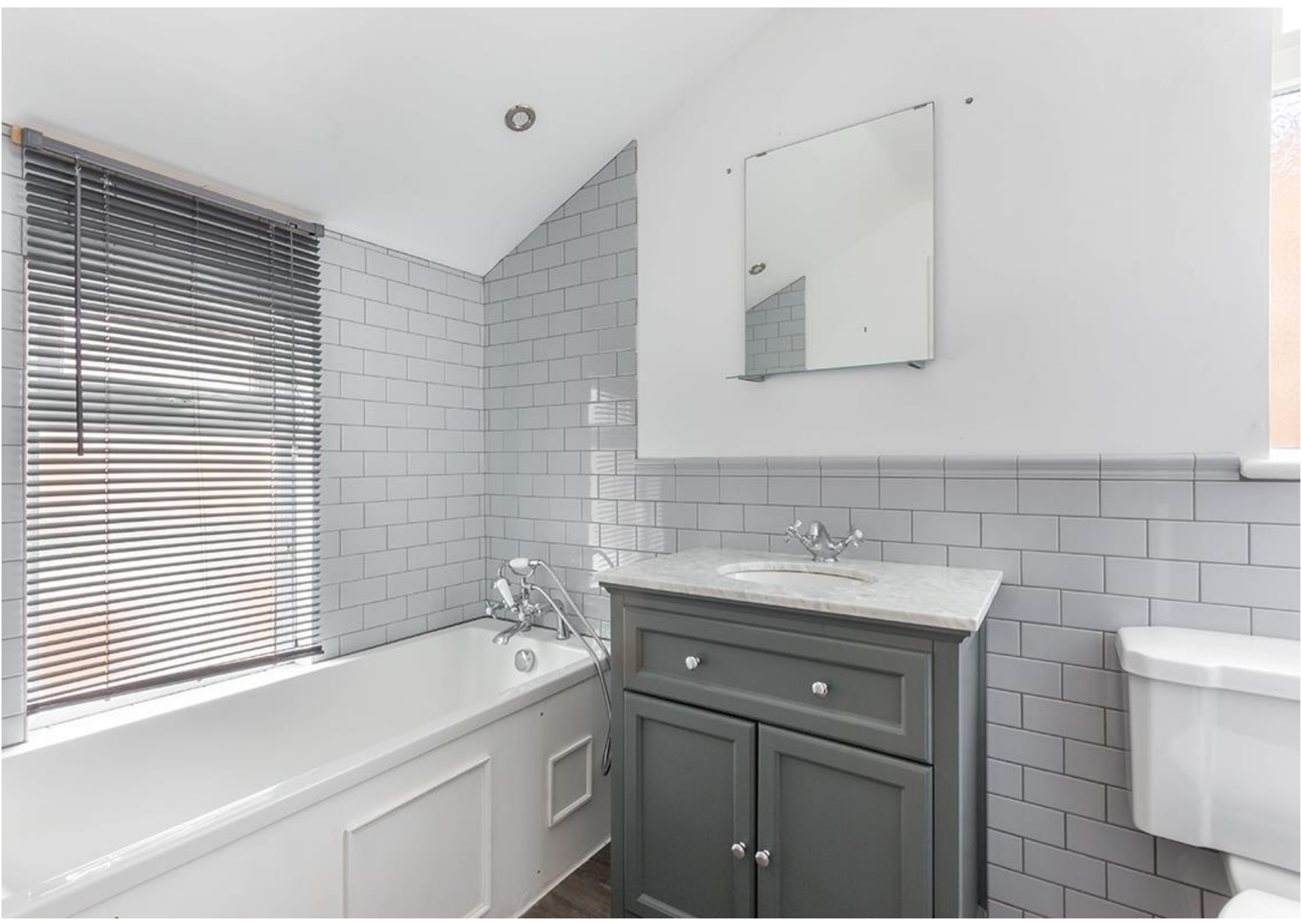
Boasting close to 1,100 sq.ft, the internal accommodation comprises: Entrance hallway with staircase leading up to first floor | First floor landing | Generous front living room with bay window and feature fireplace | Highly impressive kitchen/diner, benefitting from a range of modern cabinetry & worktops and integrated appliances throughout | Utility room | Stylish family bathroom with three piece suite | The first floor landing and offers access onto two bedrooms.

The staircase then leads up to the loft conversion and onto the principal suite, which is a large double room with walk-in wardrobe and ensuite shower room/wc.



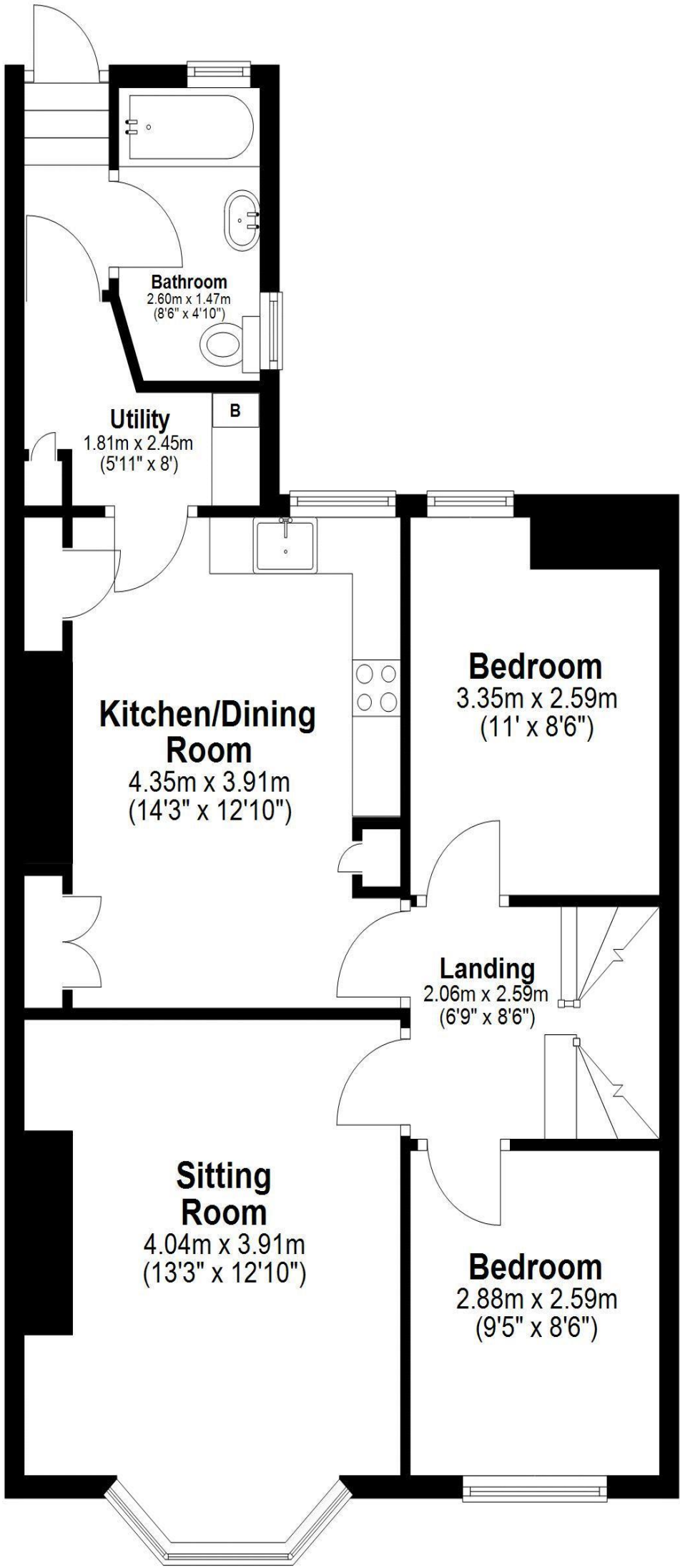
Emma Doran
0191 213 0033
Emma.doran@sandersonyoung.co.uk





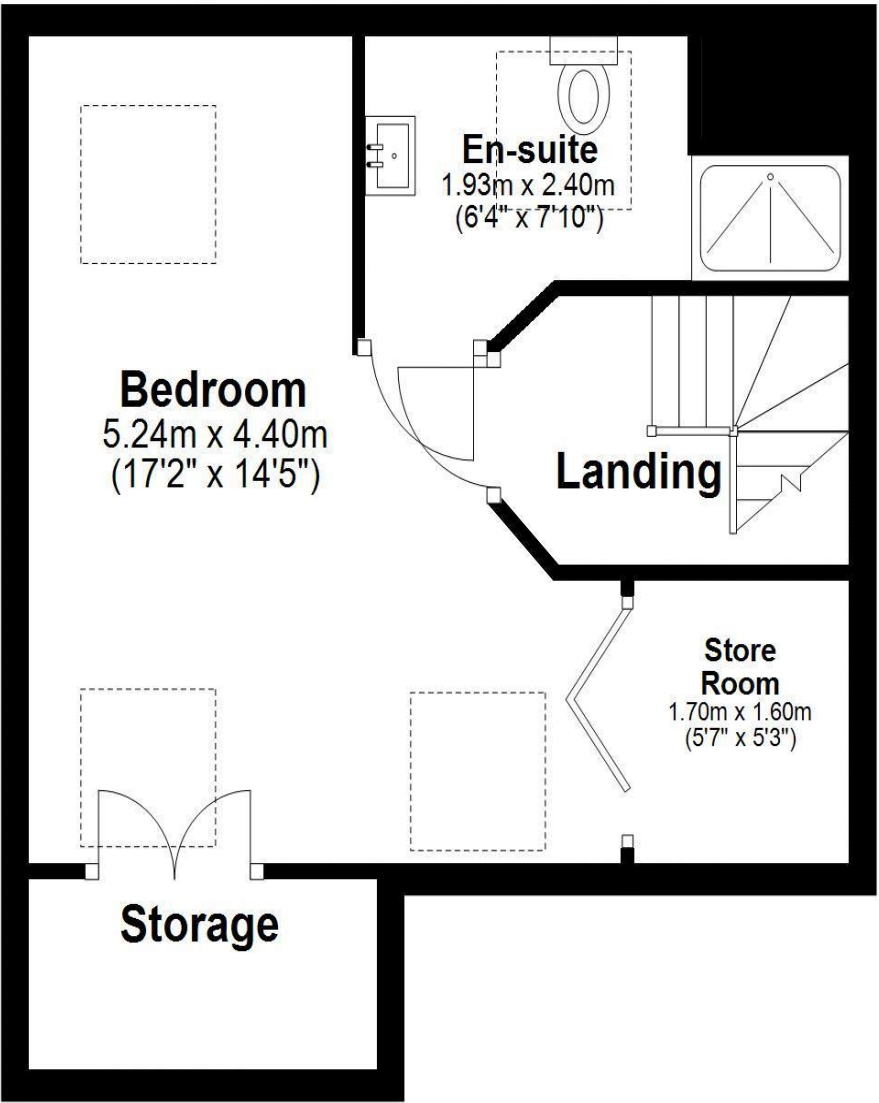
First Floor

Approx. 65.7 sq. metres (707.3 sq. feet)



Second Floor

Approx. 35.2 sq. metres (378.7 sq. feet)



Externally, the property offers a private enclosed rear courtyard garden, which is west facing, and with access onto the service lane.

Services: Mains gas, electricity, water & drainage | Tenure: Share of Freehold | Lease Remaining: 977 Years | Ground Rent: N/A | Service Charge: N/A | Council Tax: Band B | EPC Rating: D

Total area: approx. 100.9 sq. metres (1086.0 sq. feet)

29 Newlands Road, -

29 Newlands Road

High West Jesmond

